

Markus Man Overboard Scramble-net /Cradle SCN8-450 to 1200R CARGO Fact sheet 1 – Technical sheet

Designed for vessels with lifting height from 2,5 m (100") to 10 m (400"), see data table, with suitable rescue zone midship on both sides, such as rail or bulwark at the edge of the ships side, which the deck crew can lean onto when lifting a person manually. A suitable light crane system with 2 m boom at the rescue zone may be of advance to enable secure and effective rescue swimmer operation in recovery of an unconscious person.

Width: 160 cm (64") **Vertical length:** Variable, see data table – **Weight:** Variable see data table .

Freeboard: Variable, see data table on fact sheet 2.

Note: Allow 150 to 200 cm (60" to 80") below waterline to enable MOBs first step.

Comes standard with two pull-in lines and strap at lower end. Can therefore be used manually by two deck crew and by one deck crew with MOB hoisting equipment. Four deck crew can lift one person manually in horizontal position.

Methods of use:

- 1) Climbing, by max 8 persons at a time equally spread over the width.
- 2) Horizontal lifting of one person at a time manually by 4 deck crew,
- 3) For hoisting two persons at a time in horizontal position up the side of the vessel, with suitable mechanical hoisting systems and short boom.

Other Specifications:

- Fastening to ship with 9 buckle loops or with 2 ropes on an extra link pipe.
- Stowage diameter maximum: 170 x 45 x 10 cm (68 x 18 x 4 Inches) 0,0945 cubic metre.
- Packing: PVC / Polyester fabric bag, colour **orange red**. *White, Gray and Black available as special order. Available without cover bag when ordered with Upper end aluminum bar and GRP outdoor storage container. PVC cover on GRP container when stored outdoor. Recommended when vertical length is over 7 m*
- Made of Polyester webbing, and marine grade rigid plastic and metal parts.
- Each vertical webbing tensile tested in excess of 1000 kg. (2204 lbs).
- Each mesh tensile tested in excess of 500 kg: (1102 lbs).
- Tensile tested in excess of 5 metric tonne (11023 lbs) with equal load on each vertical fastening webbing loop on the upper end.
 - Pull-in ropes: PP 10 mm dia. With knots at 50 cm intervals.
- Mobile: When stored indoors in the SCN8 GRP container with extra Link-Pipe.
- Made to LSA / SOLAS standard as applicable. Subject for SOLAS type approval.
- Supplied with Certificate of confirmity and relevant test reports.

Storage and fastening options:

1. Mobile with an extra Link-Pipe equipped with 2 fixed ropes and snap hooks.
2. Ready fixed outdoor inside container to a rail or inside bulwark.

Available SCN8 accessories and extra parts:

ML Part no. – Product name

7360002 – SCN8 Link-pipe with 2 ropes and snap hooks.

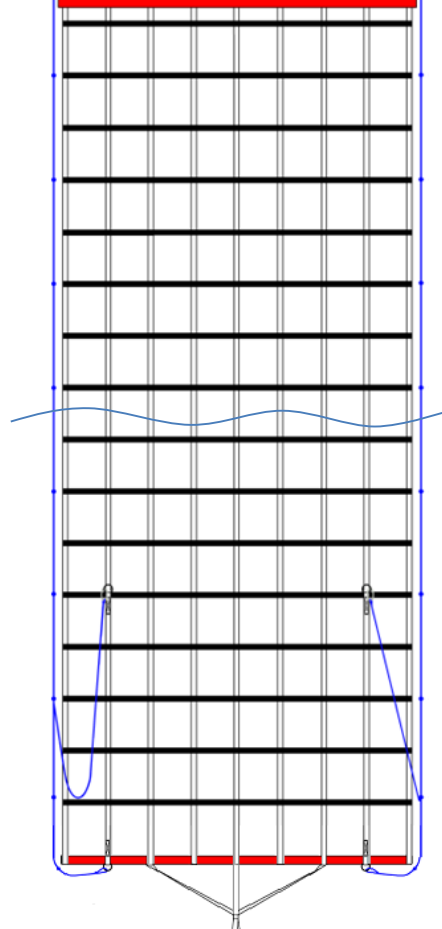
7360003 – SCN8 Link-pipe with 2 adjustable ropes and snap hooks.

7360035 – SCN8 With aluminum upper bar, (not with buckle loops and PVC fabric cover bag).

SCN8 Upper end "A" Alumium Bar version.



SCN8 Upper end "L" Link-pipe version.





Marine Rescue Technologies, Inc.
+1-772-388-1326
www.MarineRescueTechnologies.com
SOS@MarineRescueTechnologies.com
1623 US Highway 1, Suite A-1 – Sebastian, FL, 32958

Man overboard safety and rescue is our concern and speciality.



Markus Man Overboard Scramble-net /Cradle CARGO/SCN8-450 to 1200R Fact sheet 2 – Data table / Selection sheet

*Defination of :“manual lifting height”

Manual lifting height is the length from water level to top of rail or bulwark.

Info in this frame to be filled in by the manufacturer or his representative.

Type name : **SCN8-450R** Serial no.: **2716**

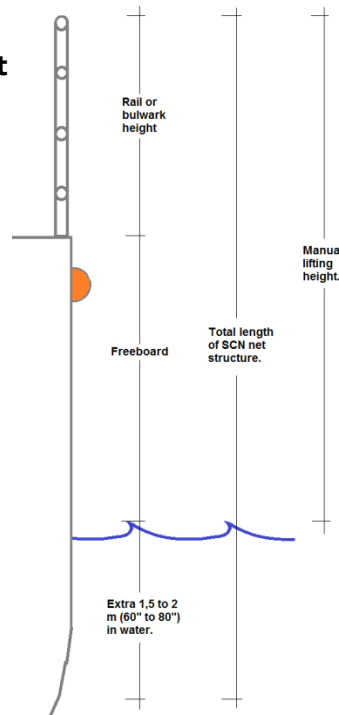
Date: **2018-12-05** Filled in by: _____

Size: Width 160 cm (64”) x vertical length required _____.

Note: Allow 150 to 200 cm (60” to 80”) below waterline to enable MOB's fyrst step.

Underline color selection of cover bag: Orange Red, White, Gray, Black.

The data table here below shows the version of the SCN8, what lifting height it is designed for and the assecories chosen with it.



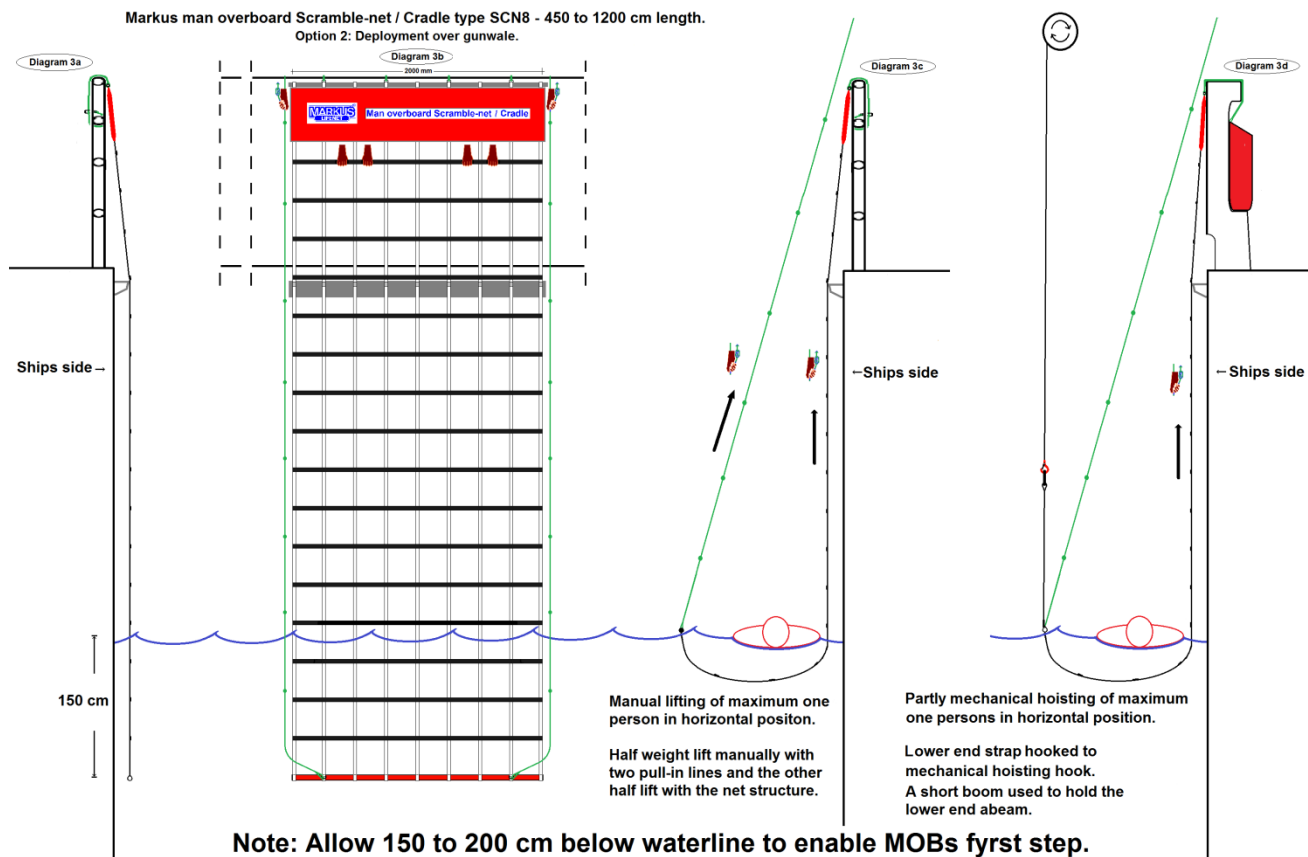
Vertical length in cm (inc)	Lifting height* max cm (inc)	Approxim. Weight kg (lbs)	SCN8 Link-pipe Length of ropes in cm	SCN8 Link-pipe Adjustable Length of ropes in cm	With upper-bar only	With GRP Container	With Container Cover	Selected type marked. Serial no.:
450 (180)	300 (120)	12,3 (27,1)						2716
500 (200)	350 (140)	12,9 (28,3)						
550 (220)	400 (160)	13,4 (29,5)						
600 (240)	450 (180)	13,9 (30,7)						
650 (260)	500 (200)	14,5 (31,9)						
700 (280)	550 (220)	15,0 (33,1)						
750 (300)	600 (240)	15,6 (34,3)						
800 (320)	650 (260)	16,1 (35,5)						
850 (340)	700 (280)	16,7 (36,7)						
900 (360)	750 (300)	17,2 (37,9)						
950 (380)	800 (320)	17,8 (39,1)						
1000 (400)	850 (340)	18,3 (40,3)						
1050 (420)	900 (360)	18,8 (41,5)						
1100 (440)	950 (380)	19,4 (42,7)						
1150 (460)	1000 (400)	19,9 (43,9)						
1200 (480)	1050 (420)	20,5 (45,1)						

Man overboard safety and rescue is our concern and speciality.



Markus Man Overboard Scramble-net / Cradle CARGO/SCN8-450 to 1200R Fact sheet 3 – Instruction diagrams

Diagrams of deployment possibilities and use of Markus Man overboard Scramble-net / Cradle applicable for SCN8 of vertical length over 4 m (160")



Use manually to recover a conscious and active PIW (MOB).

Throw or shoot out line to MOB. Other crew members bring a mobile unit to the rescue platform and fasten to fastening eyes (hooks) inside bulwark or to a rail. Release unit over the side. Pull the MOB to the unit and as the MOB has managed to step onto the net structure and secure his hands to it, lift him simultaneously on board.

SCN8 with lower end hoisting strap Used manually and by crane to secure rescue swimmer boarding and to recover an unconscious MOB.

Rescue swimmer lowered to water with tenderline through the hoisting hook. When the rescue swimmer has secure grip on the MOB, the MOB is pulled to the SCN net, where the rescue swimmer places the MOB in the lower end of the net. The rescue swimmer then hooks his harness hoisting ring on the hoisting hook and both are hoisted on board.



Marine Rescue Technologies, Inc.
Call: +1-772-388-1326
Email: SOS@MarineRescueTechnologies.com
Visit: www.MarineRescueTechnologies.com
1623 US Highway 1, Suite A-1 – Sebastian, FL, 32958

Man overboard safety and rescue is our concern and speciality.



Markus Lifenet Ltd.

Certificate of Conformity

This certificate provides assurance that the Markus Man Overboard (MOB) Recovery products are made in Iceland to the SOLAS/LSA code as applicable for man overboard recovery and is at present a subject for LR Certificate of Type Approval to ISO WD 19898 Devices for recovery of person(s) from water.

The Markus MOB Scramble-net / Cradle / Scoop type SCN8, is a commercial man overboard recovery system, mainly constructed from polyester webbing, polypropelen rope and PVC and PU fabric. Standard metal parts are made of marine grade material.

The Markus SCN material and joints have been tensile tested by independant test service centre, the Innovation Centre in Iceland to withstand the tensile strength listed in the technical sheet for each product and performance tested in rough sea conditions on the Icelandic Coastguard ships Thor and Ægir.

The Markus MOB Scramble-net / Cradle products type SCN do not contain either Asbestos or PCB. All parts can be recycled.

Issued 1st May 2015 by

A handwritten signature in blue ink, appearing to read "Petur Th Petursson".

Petur Th Petursson, Managing Director.



ISO 9001:2008 Certified Management System by Lloyd's Register LRQA

Man overboard safety and rescue is our concern and speciality.

